



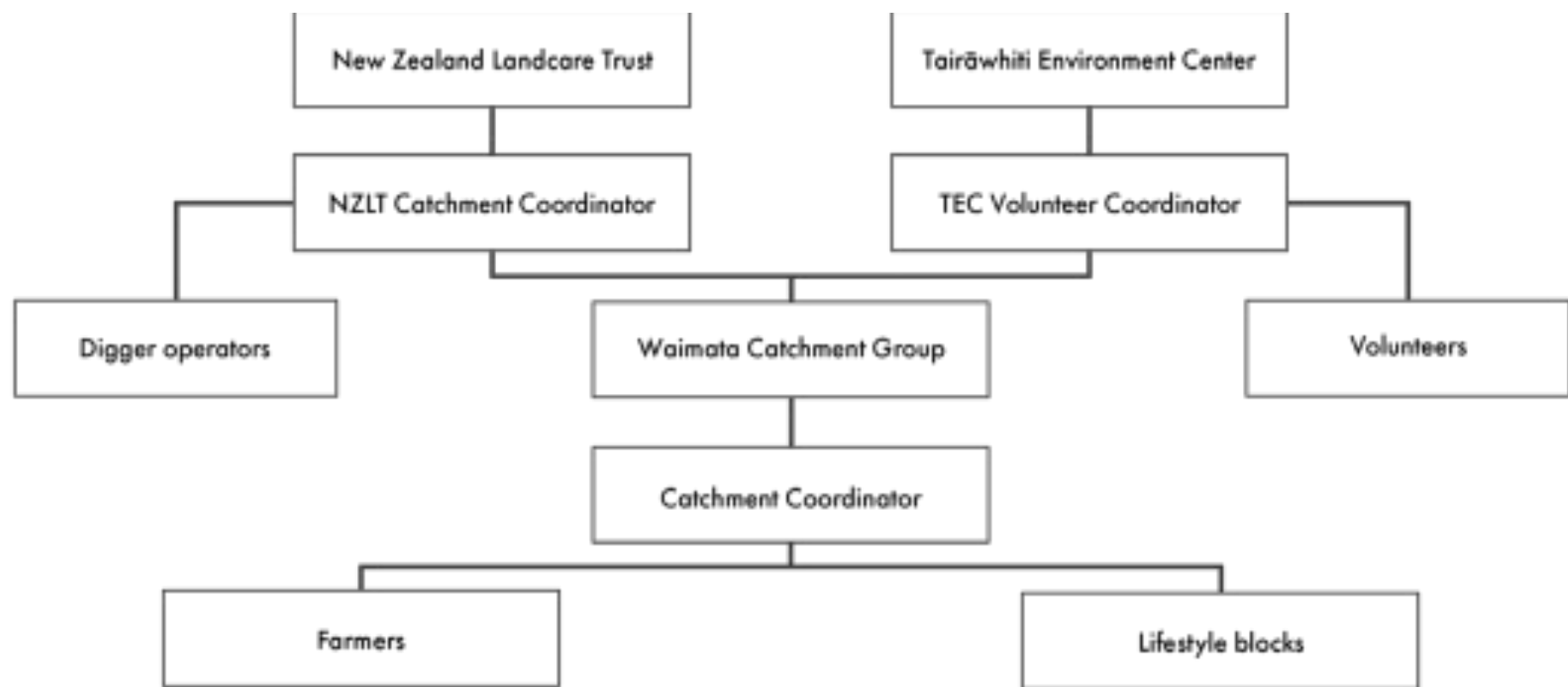
Take away messages

- Have a well established catchment group
- Know your numbers
- Tell your story
- Have a town base



Week 1

- Door to door assessment
- Applied for support on behalf of farmers
- Coordinated volunteers
- Build a plan.





The equation of health

- Repaired infrastructure = \$ + animal welfare.
- Fixed \$ flow + animal welfare = stress alleviated.
- Alleviation of stress = we don't lose businesses or people.

Tell your story



- Video
- Images
- Have a face for your campaign
- Story = support
- Your story brings in \$, diggers, volunteers and resources.

Where do I start?

1

We will pay the first \$5K of digger work on your property.

You can decide if you wish to use the digger after this point. Cost of \$180/hr

2

MPI have \$10K grants for Sheep and Beef farmers for recovery work

We can help fill in the forms for you or you can do so yourself by going to <https://www.mpi.govt.nz/funding-rural-support>. All of the grant applications have been successful so far, so it is worth your while applying.


3

Business Response survey for Central Government

We can fill this in on your behalf or you can do so yourself by going to <https://trusttairāwhiti.nz/cyclone-gabrielle>. Follow the link to cyclone recovery grants. This is **extremely important** as it will determine how much funding the Waimata Catchment will receive for future recovery.

4

Let us know what volunteer help you need & when you need it.

- musterers
 - dagging contractors and flystrike chemical application
 - fencers
 - labourers to clear out woolsheds, stock yards, etc.
 - plumbers
 - electricians
 - pre-built floodgates
- 

Week 2

- Communicate a clear plan forward.
- Volunteer fatigue.
- Capitalise on funding now!



Know your numbers

- How many properties
- Km's of boundary fence
- Km's river frontage
- Km's primary and secondary tracks
- Ha of river flats
- A solid contact list



Urban Volunteers

- People want to help
- A volunteer coordinator is key
- You need tools, food, trailers and a jobs list
- These volunteers free farmers up to farm

Week 3



- Govt support should be kicking in.
- Community resilience wavers.
- Coordinator exhaustion.
- Your situation is old news...



An amazing catchment
coordinator is key!



Week 4

- Bring in outside resources.
- Deliver on funding goals and farmer priorities.
- Back off workload.
- Apply for funding and volunteer support.





Weeks 5 onward

- It's not going away in a hurry...
- Build a solid report that can generate more \$
- Ministers and media are looking for positive stories. Contact them directly.



Access and coms are gone

- Roads are gone for months
- Coms are down for at least a few weeks
- Overland musters



How are we now?

- Roads are still gone...
- A drought predicted for summer so we need to offload stock!
- But the community is strong and united. Bring it on.



In the end it comes down to
community

- Catchment groups are key
- A town base
- Great coordinators
- Tell your story
- Act fast

